


FISHWAY STATUS REPORT

Date: 7/6/2014
Inspection Period: 6/29 thru 7/05/2014

All JD Fishways are inspected twice per day during fish season, March. 1 - Nov. 31
 Frequent monitoring of the PLC displays in SMF Fisheries Office as necessary.

	JOHN DAY DAM	
	JD/WC Project-Fisheries P.O. Box 823 Rufus, Oregon 97050 Phone: 541-506-7860	

John Day Dam	Inspections	Criteria	Total Number of Inspections: 14	Temperature: 64 F
	Out of Criteria	Limit		Secchi: 4.6 Ft.
NORTH FISHWAY			In regular service. Five AWS pumps available since 4/11.	
Exit differential	0	≤ 0.5'		
Exit Control weirs	0	MID setting	Temporary Mid setting for Sockeye	
Count station differential	0	≤ 0.3'		
Weir crest depth (DS gauge)	0	1.3' ± 0.1'	Temporary 1.3' for shad passage since 5/22.	
Entrance differential	0	1.0' - 2.0'	AVG 1.5	
SOUTH FISHWAY			In regular service with all three AWS turbines.	
Exit differential	0	≤ 0.5'		
Exit Control weirs	0	MID setting	MID is normal for JDS	
Count station differential	0	≤ 0.3'		
Weir crest depth (US gauge)	0	1.3' ± 0.1'	Temporary 1.3' for shad passage since 5/22.	
South entrance differential	0	1.0' - 2.0'	AVG 1.4	
Entrance weir SE1	0	depth (≥ 8')	AVG 8.8	
Collection channel velocity	0	1.5 - 4 fps	AVG #REF!	
Bay 1 differential	0	1.0' - 2.0'	AVG 1.7	
N. Entrance PH(Bay 19)differential	0	1.0' - 2.0'	AVG 1.7	
Entrance weir NE1	0	depth (≥ 8')	AVG 8.7	
Entrance weir NE2	0	depth (≥ 8')	AVG 8.7	
JUVENILE PASSAGE			JBS/SMF in regular service since 3/30.	
Forebay/bypass conduit differential	0	4.0' - 5.0'	AVG 4.6	
Submersible traveling screens	0	visual inspect	Camera STS inspection completed by 6/18; two bad screens replaced with spares.	
Turbine trashrack drawdown	0	<1.5', wkly		
Vert barrier screen drawdown	0	<1.5', wkly	JD Fisheries crew performs frequent gate wells' drawdowns depending on river debris.	
Spill volume	0	30/40 %	Per the PNNL experimental block design, changing every two days.	
Spill pattern	0	per FPP		
Turbine Unit Priority	0	per FPP		
Turbine 1% Efficiency	0	per FPP		

SMOLT MONITORING FACILITY

Operation: SMF is in sampling mode since 3/31 AM. Daily 24 hrs smolt sampling by PSMFC crew since 4/1.

JD Fisheries works regular 24/7 swing shift schedule as required by FPP; it will continue this until the end of sampling season on 9/15.

Debris: Moderate to light; primarily tumbleweeds with some sticks, branches, and wooden debris.

Maintenance: None

Research:

PNNL summer/ subyearling collection started on 6/9. They will be collecting/tagging at JD SMF 7 days a week until the study is completed in mid July.

Tribal trapping/collection of broodstock/adult lamprey started at JD on 6/12. It will last approximately one month, until the tribal 2014 quotas are caught.

Fallbacks: AVG: 179 MAX: 201 MIN: 166

OTHER ISSUES:

JOHN DAY

BIRDS : see the Avian Numbers tab. We report all species and locations, but in reality only gulls in the tailrace BRZ are relevant at JD.

USDA hazing from a boat started on 4/17; one 8 hrs shift, 7 days a week will continue through the end of July. A slight increase in numbers of gulls PM after hazing stops, but almost all are flying downstream of the avian tailrace BRZ grid. Gull predation at JD continues to be estimated as minimal.

124 out of 125 total primary lines are intact/ in place.

Operations:

JD North Fishway is in regular service and meeting the FPP criteria.

JD South Fishway in regular service and meeting the FPP criteria.

Maintenance:

JD North AWS pumps - five out of total six are available for service since 4/11. AWS pump # 4 continues in OOS status due to its lower bearing issues.

JD Engineering/contractor continue with its repairs.

Calibration: 7/4/2014 All sensors were within the criteria of 0.3' .

Gatewell Drawdown: No units measured greater than 1.3 ft of differential for this reporting week.

Condition of smolts sampled at SMF was normal for this time of year, with no signs of elevated descaling during the entire week.

Research:

JD Fisheries continues coordinating with research groups performing 2014 studies:

Tribal collection of adult lamprey at JD began on 6/12; low catches so far.

PSMFC/WDFW dam angling from the JD PH tailrace deck for pikeminnow underway with a great week of over 1,000 fish caught; total YTD catch is well over 2,500.

U of I Testing of JD North LPS (Lamprey Passage System) started collecting this week.

PNNL's Spring/ Yearling Component completed at JD SMF on 5/28 (last day of collecting juveniles for tagging.)

PNNL JD Summer /Subyearling passage survival study started on 6/9 (first day of collection.) Collection and tagging will occur at JD SMF 7 days a week until approximately mid July.

2014 Adult Salmonids counting by Normandeau Ass. continues through October 31 as required by FPP.

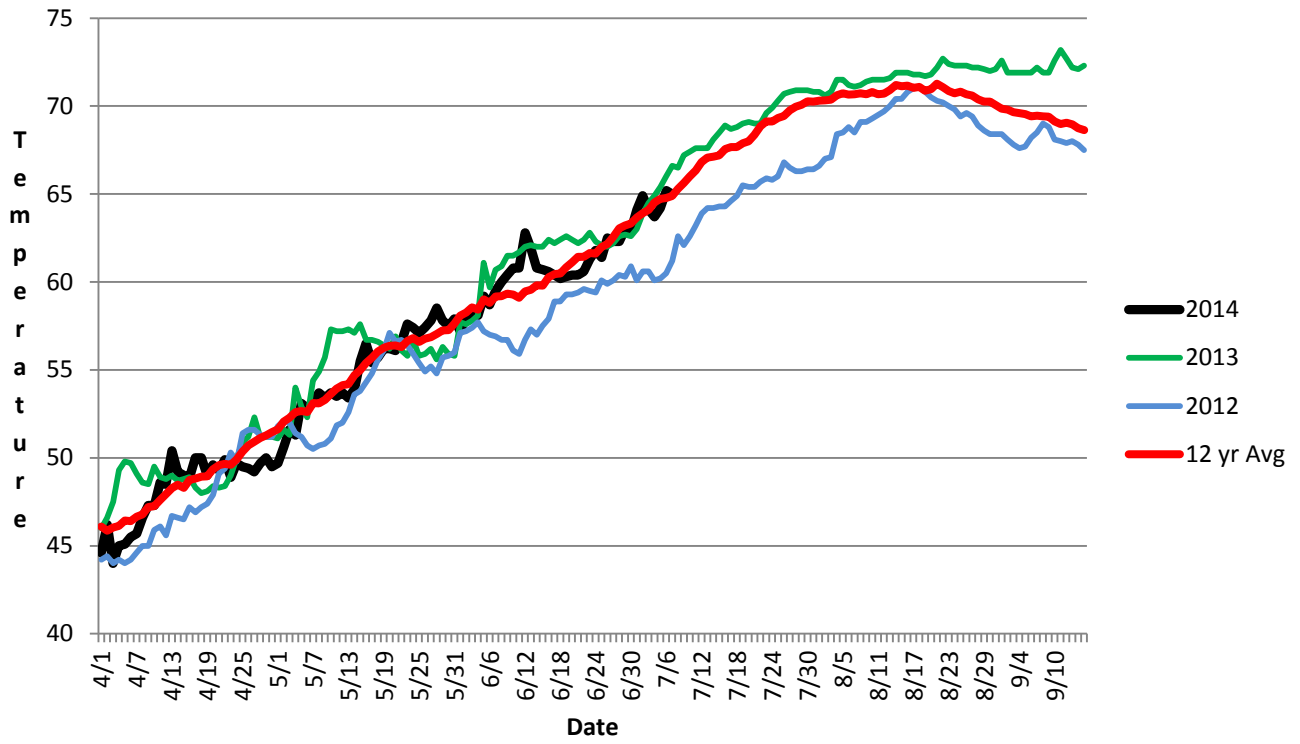
Adult Salmonids Radio telemetry evaluations are ongoing at both JD adult fishway. University of Idaho crew is in charge of detecting of all adult salmonids, which were tagged and released at Bonneville Dam.

Glen A. Smith PE

Date:___ 6-Jul-14

OPM John Day/Willow Creek Project

JDA SMF Water Temp



John Day Dam Collection Channel Velocity

Date 23-Jun-14

By: pkf

Bay(s)	Time	Sec.	Velocity (f/s)
0-2	01:12.0	72	2.50
2 - 4	0:02:17	137	2.77
4 - 6	0:03:21	201	2.81
6 - 8	0:04:36	276	2.40
8 - 10	0:05:41	341	2.77
10 - 12	0:06:39	399	3.10
12 - 14	0:07:33	453	3.33
14 - 16	0:08:33	513	3.00
16 - 18	0:09:14	554	4.39

3.01

2014 JDA Piscivorous Bird Counts

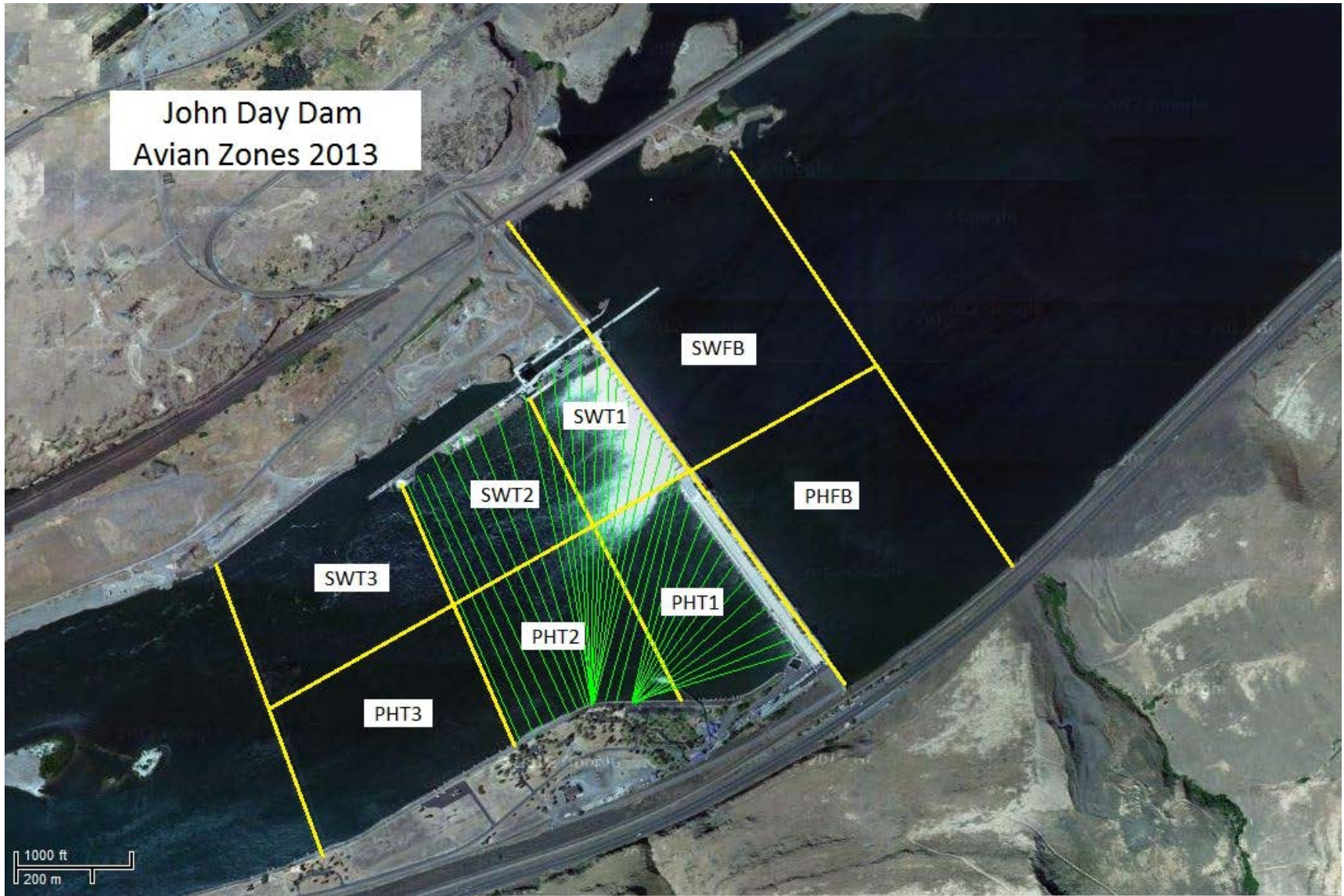
F=foraging, NF=non-foraging

Date	Session	Time (24 hr)	Zone	Gull		Cormorant		Caspian tern		AWPE		Grebe		Total birds in zone	Observer
				F	NF	F	NF	F	NF	F	NF	F	NF		
28-Jun-14	1	7:30	PHFB	0	1	0	0	0	0	0	8	0	0	9	DEK
28-Jun-14	1	7:30	SWFB	0	0	0	0	0	0	0	1	0	0	1	DEK
28-Jun-14	1	7:30	PH1	0	0	0	0	0	0	0	0	0	0	0	DEK
28-Jun-14	1	7:30	PH2	3	0	0	0	0	0	0	0	0	0	3	DEK
28-Jun-14	1	7:30	PH3	0	0	0	0	0	0	0	0	0	0	0	DEK
28-Jun-14	1	7:30	SW1	0	0	0	0	0	0	0	0	0	0	0	DEK
28-Jun-14	1	7:30	SW2	0	0	0	0	0	0	0	0	0	0	0	DEK
28-Jun-14	1	7:30	SW3	0	0	0	0	0	0	0	3	0	0	3	DEK
28-Jun-14	2	14:00	PHFB	1	0	0	0	0	0	0	2	0	14	17	DEK
28-Jun-14	2	14:00	SWFB	0	0	0	0	0	0	0	0	0	0	0	DEK
28-Jun-14	2	14:00	PH1	0	0	0	0	0	0	0	0	0	0	0	DEK
28-Jun-14	2	14:00	PH2	4	0	0	0	0	0	0	0	0	0	4	DEK
28-Jun-14	2	14:00	PH3	0	0	0	0	0	0	0	0	0	0	0	DEK
28-Jun-14	2	14:00	SW1	0	0	0	0	0	0	0	0	0	0	0	DEK
28-Jun-14	2	14:00	SW2	0	0	0	0	0	0	0	0	0	0	0	DEK
28-Jun-14	2	14:00	SW3	0	0	0	0	0	0	0	0	0	0	0	DEK
29-Jun-14	1	7:30	PHFB	0	0	0	0	0	0	0	6	0	17	23	DEK
29-Jun-14	1	7:30	SWFB	0	0	0	0	0	0	0	0	0	0	0	DEK
29-Jun-14	1	7:30	PH1	0	0	0	0	0	0	0	0	0	0	0	DEK
29-Jun-14	1	7:30	PH2	5	0	0	0	0	0	0	0	0	0	5	DEK
29-Jun-14	1	7:30	PH3	0	0	0	0	0	0	0	0	0	0	0	DEK
29-Jun-14	1	7:30	SW1	0	0	0	0	0	0	0	0	0	0	0	DEK
29-Jun-14	1	7:30	SW2	0	0	0	0	0	0	0	0	0	0	0	DEK
29-Jun-14	1	7:30	SW3	0	0	0	0	0	0	0	1	0	0	1	DEK
29-Jun-14	2	14:00	PHFB	0	0	0	0	0	0	0	0	0	14	14	DEK
29-Jun-14	2	14:00	SWFB	0	0	0	0	0	0	0	0	0	0	0	DEK
29-Jun-14	2	14:00	PH1	0	0	0	0	0	0	0	0	0	0	0	DEK
29-Jun-14	2	14:00	PH2	4	0	0	0	0	0	0	0	0	0	4	DEK
29-Jun-14	2	14:00	PH3	0	0	0	0	0	0	0	0	0	0	0	DEK
29-Jun-14	2	14:00	SW1	0	0	0	0	0	0	0	0	0	0	0	DEK
29-Jun-14	2	14:00	SW2	0	0	0	0	0	0	0	0	0	0	0	DEK
29-Jun-14	2	14:00	SW3	0	0	0	0	0	0	3	0	0	0	3	DEK
30-Jun-14	1	7:30	PHFB	0	0	0	0	5	0	0	5	0	9	19	DEK

30-Jun-14	1	7:30	SWFB	0	0	0	0	0	0	0	1	0	0	1	DEK
30-Jun-14	1	7:30	PH1	0	0	0	0	0	0	0	0	0	0	0	DEK
30-Jun-14	1	7:30	PH2	6	0	0	0	0	0	0	0	0	0	6	DEK
30-Jun-14	1	7:30	PH3	3	0	0	0	0	0	0	1	0	0	4	DEK
30-Jun-14	1	7:30	SW1	0	0	0	0	0	0	0	0	0	0	0	DEK
30-Jun-14	1	7:30	SW2	0	0	0	0	0	0	0	0	0	0	0	DEK
30-Jun-14	1	7:30	SW3	2	0	0	0	0	0	0	10	0	0	12	DEK
30-Jun-14	2	14:00	PHFB	0	3	0	0	0	0	0	4	0	11	18	DEK
30-Jun-14	2	14:00	SWFB	0	0	0	0	0	0	0	0	0	0	0	DEK
30-Jun-14	2	14:00	PH1	0	0	0	0	0	0	0	0	0	0	0	DEK
30-Jun-14	2	14:00	PH2	1	0	0	0	0	0	0	0	0	0	1	DEK
30-Jun-14	2	14:00	PH3	0	0	0	0	0	0	0	0	0	0	0	DEK
30-Jun-14	2	14:00	SW1	0	0	0	0	0	0	0	0	0	0	0	DEK
30-Jun-14	2	14:00	SW2	0	0	0	0	0	0	0	0	0	0	0	DEK
30-Jun-14	2	14:00	SW3	0	0	0	0	0	0	0	2	0	0	2	DEK
1-Jul-14	1	7:30	PHFB	0	1	0	0	0	0	0	4	0	0	5	DEK
1-Jul-14	1	7:30	SWFB	0	0	0	0	0	0	0	0	0	8	8	DEK
1-Jul-14	1	7:30	PH1	0	0	0	0	0	0	0	0	0	0	0	DEK
1-Jul-14	1	7:30	PH2	0	0	0	0	0	0	0	0	0	0	0	DEK
1-Jul-14	1	7:30	PH3	0	0	0	0	0	0	0	2	0	0	2	DEK
1-Jul-14	1	7:30	SW1	0	0	0	0	0	0	0	0	0	0	0	DEK
1-Jul-14	1	7:30	SW2	0	0	0	0	0	0	0	0	0	0	0	DEK
1-Jul-14	1	7:30	SW3	0	0	0	0	0	0	0	25	0	0	25	DEK
1-Jul-14	2	14:00	PHFB	0	1	0	0	0	0	0	0	0	0	1	DEK
1-Jul-14	2	14:00	SWFB	0	0	0	0	0	0	0	0	0	0	0	DEK
1-Jul-14	2	14:00	PH1	0	0	0	0	0	0	0	0	0	0	0	DEK
1-Jul-14	2	14:00	PH2	2	0	0	0	0	0	0	0	0	0	2	DEK
1-Jul-14	2	14:00	PH3	0	0	0	0	0	0	0	0	0	0	0	DEK
1-Jul-14	2	14:00	SW1	0	0	0	0	0	0	0	0	0	0	0	DEK
1-Jul-14	2	14:00	SW2	0	0	0	0	0	0	0	0	0	0	0	DEK
1-Jul-14	2	14:00	SW3	0	0	0	0	0	0	0	6	0	0	6	DEK
2-Jul-14	1	7:30	PHFB	4	0	0	0	0	0	13	0	7	0	24	PKR
2-Jul-14	1	7:30	SWFB	0	0	0	0	0	0	0	0	0	0	0	PKR
2-Jul-14	1	7:30	PH1	0	0	0	0	0	0	0	0	0	0	0	PKR
2-Jul-14	1	7:30	PH2	0	0	0	0	0	0	0	0	0	0	0	PKR
2-Jul-14	1	7:30	PH3	0	0	0	0	0	0	0	0	0	0	0	PKR
2-Jul-14	1	7:30	SW1	3	0	0	0	0	0	0	0	0	0	3	PKR
2-Jul-14	1	7:30	SW2	0	0	0	0	0	0	0	0	0	0	0	PKR
2-Jul-14	1	7:30	SW3	2	0	0	0	0	0	0	0	0	0	2	PKR
2-Jul-14	2	14:00	PHFB	5	0	0	0	0	0	5	0	1	0	11	PKR

5-Jul-14	1	7:30	SWFB	0	0	0	0	0	0	0	0	0	0	0	0	PKR
5-Jul-14	1	7:30	PH1	0	0	0	0	0	0	0	0	0	0	0	0	PKR
5-Jul-14	1	7:30	PH2	0	0	0	0	0	0	0	0	0	0	0	0	PKR
5-Jul-14	1	7:30	PH3	0	0	0	0	0	0	0	0	0	0	0	0	PKR
5-Jul-14	1	7:30	SW1	0	0	0	0	0	0	0	0	0	0	0	0	PKR
5-Jul-14	1	7:30	SW2	6	0	0	0	0	0	0	0	0	0	0	6	PKR
5-Jul-14	1	7:30	SW3	0	0	0	0	0	0	0	0	0	0	0	0	PKR
5-Jul-14	2	14:00	PHFB	11	0	0	0	0	0	5	0	5	0	21	0	PKR
5-Jul-14	2	14:00	SWFB	0	0	0	0	0	0	0	0	0	0	0	0	PKR
5-Jul-14	2	14:00	PH1	0	0	0	0	0	0	0	0	0	0	0	0	PKR
5-Jul-14	2	14:00	PH2	0	0	0	0	0	0	0	0	0	0	0	0	PKR
5-Jul-14	2	14:00	PH3	0	0	0	0	0	0	0	0	0	0	0	0	PKR
5-Jul-14	2	14:00	SW1	7	0	0	0	0	0	0	0	0	0	7	0	PKR
5-Jul-14	2	14:00	SW2	15	0	0	0	0	0	0	0	0	0	15	0	PKR
5-Jul-14	2	14:00	SW3	5	0	0	0	0	0	0	0	0	0	5	0	PKR

John Day Dam
Avian Zones 2013



John Day:

	Temp:	Secchi:	Fallbacks
Sun	63	5.0	173
Mon	63	5.0	180
Tues	63	5.0	172
Wed	63	5.0	168
Thur	64	4.0	201
Fri	64	4.0	166
Sat	65	4.0	191
AVG:	64	AVG: 4.6	AVG 179
			MAX 201
			MIN 166

	NE1	NE2	S.Ent	SE1	N.Ent	JBS Diff	Bay1	Bay19
Sun	8.5	8.5	1.4	8.5	1.4	4.5	1.8	1.8
Sun	9.0	9.0	1.6	9.2	1.5	4.5	1.6	1.9
Mon	8.7	8.7	1.5	8.7	1.5	4.5	1.8	1.8
Mon	8.7	8.7	1.4	8.7	1.4	4.5	1.7	1.9
Tues	8.0	8.0	1.6	8.1	1.6	4.6	1.9	1.9
Tues	9.0	9.0	1.3	8.7	1.4	4.5	1.7	1.5
Wed	9.0	9.0	1.4	9.1	1.5	4.6	1.6	1.7
Wed	8.9	8.9	1.3	9.0	1.6	4.6	1.6	1.7
Thur	8.2	8.5	1.6	8.3	1.5	4.6	1.8	1.9
Thur	9.0	9.0	1.3	9.0	1.5	4.7	1.6	1.7
Fri	8.4	8.5	1.4	8.6	1.4	4.7	1.7	1.4
Fri	9.8	9.9	1.1	10.1	1.5	4.6	1.3	1.3
Sat	8.1	8.1	1.4	8.0	1.4	4.6	1.7	1.8
Sat	8.6	8.6	1.5	8.6	1.4	4.6	1.6	1.8
AVG:	8.7	8.7	1.4	8.8	1.5	4.6	1.7	1.7